

# DLR1502WPEHD-Z

## Chain stitch Machine for attaching zipper

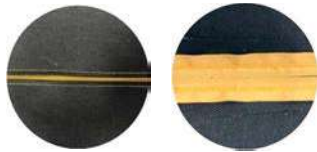
2 needle, flat bed, double chain stitch machine for zipper attaching.

Suitable for zipper sewing with special gauge, folder. It achieves a strong and uniform zipper attachment to medium-thick to thick fabrics.

This model is suitable for sewing zippers on furniture etc.



### Features



### Realizing stable sewing

- Special gauge parts with zipper chute and folder.
- Special top and bottom rubber pullers with stabilize zipper attaching.
- Compatible with 25mm wide fasteners.



### 【User friendly functions】



#### ■ Dedicated folder

A special folder securely feeds the fabric and zipper, easily achieving a neat finish.



#### ■ Easy to thread

It is equipped with a looper tilting mechanism that makes it easier to thread the looper.

Specifications	DLR1502WPEHD-Z
Max. Speed	4500 rpm
Needle Type	Organ TV x 5 #21
Stitch Length	7~16 inch
Presser Foot Lift	10 mm
Needle Bar Stroke	34 mm
Diff. Feed Ratio	N/A
Gauge Size	1/2 inch
Application	Attaching zipper
Material	Medium

