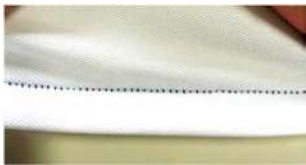


JJ5014GH-01M-2x4-ABS-2

Blind stitch Bottom hemming machine

2 needle, 4 thread, cylinder bed, semi-automatic blind stitch overlock machine for T-shirts hemming.

The length of blind stitch can be easily changed in the settings.



Front side



Back side



Feature

Operator support function

Folder can be opened and closed optionally when sewing blind stitches.

This device allows for beautiful finishes even for unskilled operators.



【Complete set】



Specifications	JJ5014GH-01M-2x4-ABS-2
Max. Speed	4500 rpm
Needle Type	Organ DCx27 #9
Stitch Length	1~3.8 inch
Presser Foot Lift	5.5 mm
Needle Bar Stroke	24.4 mm
Diff. Feed Ratio	Front and back movement (ratio 0.8~1.8)
Gauge Size	2mm x 4mm
Application	Blind stitch Bottom hemming
Material	Light to Medium

